

**Technical competency:** The Psi value ( $\Psi$ ) analysis indicated below has been undertaken by a BRE accredited competent person to EN 10211 2017 and BR497 (Second Edition). Members of the Unilin Insulation Technical team are qualified under the BBA Competency Scheme CS/1006 to produce thermal and condensation risk calculations

Certificate No	Date
UI-CWP-E14-RF-02 V1	03-Oct-22

### General Construction Specification (Wall)

Plasterboard on dabs  
Air layer & plaster adhesive  
Concrete block  
Unilin Insulation XT/CWP T&G  
Residual cavity (50mm)  
Proprietary fire barrier  
Brick

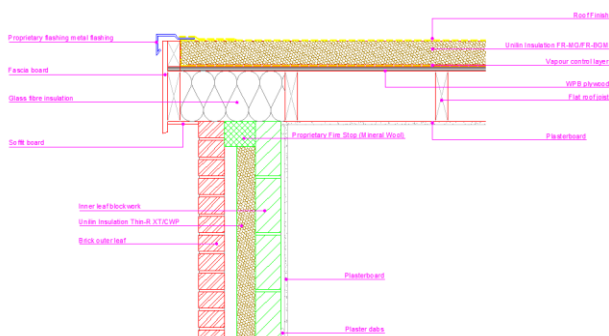
### Table K1 reference

E14

### U value range (Wall)

0.15 W/m<sup>2</sup>K - 0.21 W/m<sup>2</sup>K

### Junction detail



### Calculation prepared by Unilin Insulation Technical Services

### General Construction Specification (Flat roof)

Waterproofing membrane  
Unilin Insulation FR-MG or FR-BGM  
Vapour control layer  
Plywood deck  
Air layer between joists  
Plasterboard

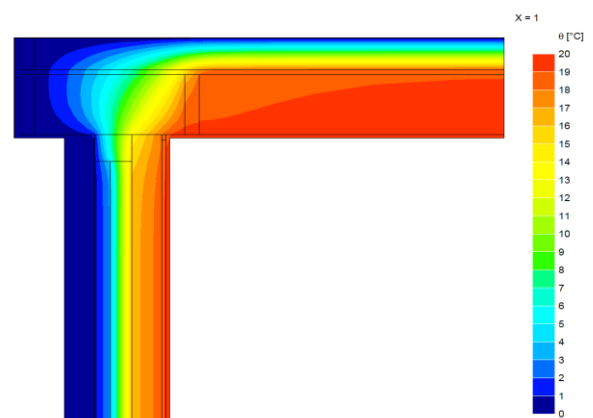
### Description

Flat roof and wall junction

### U value range (Flat roof)

0.14 W/m<sup>2</sup>K - 0.18 W/m<sup>2</sup>K

### Thermal image



### Notes

The U values indicated on this certificate are the actual U values for the proposed construction. The Psi values are calculated using the modelled U value in accordance with the guidelines set out in BR497 and ISO 10211. Contact Unilin Insulation Technical Support for further guidance

$\Psi$  and  $f$  are only valid for the detail drawn and described above

Calculations have been carried out in accordance with the following standards and guidance documents were relevant

EN ISO 10211 2017	BR 497 (Second Edition)
EN ISO 13370 2017	BR 443 2019
EN ISO 6946 2017	BRE IP1/06

### Unilin Insulation UK Ltd

Park Road  
Holmewood  
Chesterfield  
Derbyshire  
S42 5UY

t. 0371 2221055  
f. 0371 2221044  
e. [info.ui@unilin.com](mailto:info.ui@unilin.com)  
[www.unilininsulation.co.uk](http://www.unilininsulation.co.uk)

**Disclaimer:** The calculations have been completed in accordance with guidance documents as indicated above by Unilin Insulation. Any change to the materials specified would alter the results achieved and would invalidate the information contained herein. Specification and results should be verified before installation. To this extent the information and/or specification is to the best of our knowledge accurate, however Unilin Insulation specifically exclude any liability for errors, omissions or otherwise arising therefrom.

## Flat Roof Insulation

Unilin Insulation FR-MF/FR-BGM 120mm

XT/CWP T&G	75mm		100mm	
	$\psi$	$f$	$\psi$	$f$
<b>Inner block</b>				
0.11	0.041	0.95	0.041	0.96
0.15	0.042	0.95	0.041	0.96
0.19	0.042	0.95	0.042	0.96
0.31	0.043	0.95	0.043	0.96
0.57	0.044	0.95	0.043	0.96
1.13	0.045	0.95	0.044	0.96

## Flat Roof Insulation

Unilin Insulation FR-MF/FR-BGM 140mm

XT/CWP T&G	75mm		100mm	
	$\psi$	$f$	$\psi$	$f$
<b>Inner block</b>				
0.11	0.041	0.95	0.041	0.96
0.15	0.042	0.95	0.041	0.96
0.19	0.042	0.95	0.042	0.96
0.31	0.043	0.95	0.043	0.96
0.57	0.044	0.95	0.043	0.96
1.13	0.045	0.95	0.044	0.96

## Flat Roof Insulation

Unilin Insulation FR-MF/FR-BGM 160mm

XT/CWP T&G	75mm		100mm	
	$\psi$	$f$	$\psi$	$f$
<b>Inner block</b>				
0.11	0.041	0.95	0.041	0.96
0.15	0.042	0.95	0.041	0.96
0.19	0.042	0.95	0.042	0.96
0.31	0.043	0.95	0.043	0.96
0.57	0.044	0.95	0.043	0.96
1.13	0.045	0.95	0.044	0.96

$\psi$  Thermal transmittance value (W/m K)  
 $f$  Temperature factor

### Unilin Insulation UK Ltd.

Park Road  
 Holmewood  
 Chesterfield  
 Derbyshire  
 S42 5UY

t. 0371 2221055  
 f. 0371 2221044  
 e. [info.ui@unilin.com](mailto:info.ui@unilin.com)  
[www.unilininsulation.co.uk](http://www.unilininsulation.co.uk)

**Disclaimer:** The calculations have been completed in accordance with guidance documents as indicated above by Unilin Insulation. Any change to the materials specified would alter the results achieved and would invalidate the information contained herein. Specification and results should be verified before installation. To this extent the information and/or specification is to the best of our knowledge accurate, however Unilin Insulation specifically exclude any liability for errors, omissions or otherwise arising therefrom.