

Technical competency: The Psi value (Ψ) analysis indicated below has been undertaken by a BRE accredited competent person to EN 10211 2017 and BR497 (Second Edition). Members of the Unilin Insulation Technical team are qualified under the BBA Competency Scheme CS/1006 to produce thermal and condensation risk calculations



Certificate No **Date**
UI-CWP-E16-EXT-CRN V1 **03-Oct-22**

Calculation prepared by
Unilin Insulation Technical Services

General Construction Specification (Wall)
Plasterboard on dabs
Air layer & plaster adhesive
Concrete block
Unilin Insulation XT/CWP T&G
Residual cavity (50mm)
Brick

General Construction Specification
Preformed corner boards available
Unilin Insulation XT/CRNT&G_PLUS

Table K1 reference
 E16

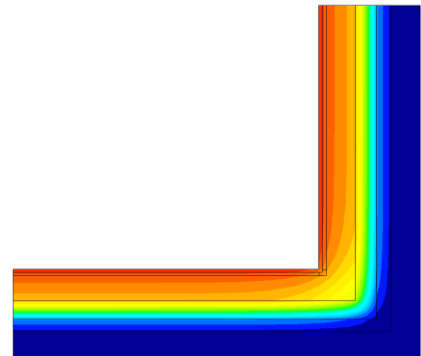
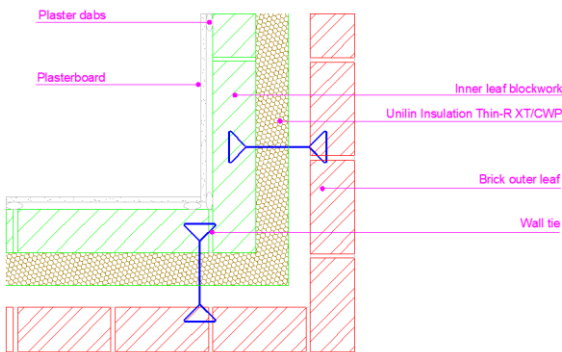
Description
 External corner

U value range (Wall)
 0.15 W/m²K - 0.21 W/m²K

U value range
 N/A

Junction detail

Thermal image



Notes
 The U values indicated on this certificate are the actual U values for the proposed construction. The Psi values are calculated using the modelled U value in accordance with the guidelines set out in BR497 and ISO 10211. Contact Unilin Insulation Technical Support for further guidance

Ψ and f are only valid for the detail drawn and described above

Calculations have been carried out in accordance with the following standards and guidance documents were relevant

EN ISO 10211 2017	BR 497 (Second Edition)
EN ISO 13370 2017	BR 443 2019
EN ISO 6946 2017	BRE IP1/06

Unilin Insulation UK Ltd

Park Road
 Holmewood **t.** 0371 2221055
 Chesterfield **f.** 0371 2221044
 Derbyshire **e.** info.ui@unilin.com
 S42 5UY www.unilininsulation.co.uk

Disclaimer: The calculations have been completed in accordance with guidance documents as indicated above by Unilin Insulation. Any change to the materials specified would alter the results achieved and would invalidate the information contained herein. Specification and results should be verified before installation. To this extent the information and/or specification is to the best of our knowledge accurate, however Unilin Insulation specifically exclude any liability for errors, omissions or otherwise arising therefrom.

XT/CWP T&G	75mm		100mm	
	ψ	f	ψ	f
Inner block				
0.11	0.041	0.92	0.037	0.93
0.15	0.044	0.92	0.039	0.93
0.19	0.045	0.92	0.040	0.93
0.31	0.048	0.92	0.042	0.93
0.57	0.052	0.93	0.045	0.94
1.13	0.055	0.93	0.047	0.94

ψ Thermal transmittance value (W/m K)

f Temperature factor

Unilin Insulation UK Ltd.

Park Road

Holmewood

Chesterfield

Derbyshire

S42 5UY

t. 0371 2221055

f. 0371 2221044

e. info.ui@unilin.com

www.unilininsulation.co.uk

Disclaimer: The calculations have been completed in accordance with guidance documents as indicated above by Unilin Insulation. Any change to the materials specified would alter the results achieved and would invalidate the information contained herein. Specification and results should be verified before installation. To this extent the information and/or specification is to the best of our knowledge accurate, however Unilin Insulation specifically exclude any liability for errors, omissions or otherwise arising therefrom.